

SHINING3DDENTAL.COM

SHINING 3D
DENTAL



AccuFab-L4K Dental 3D Printer

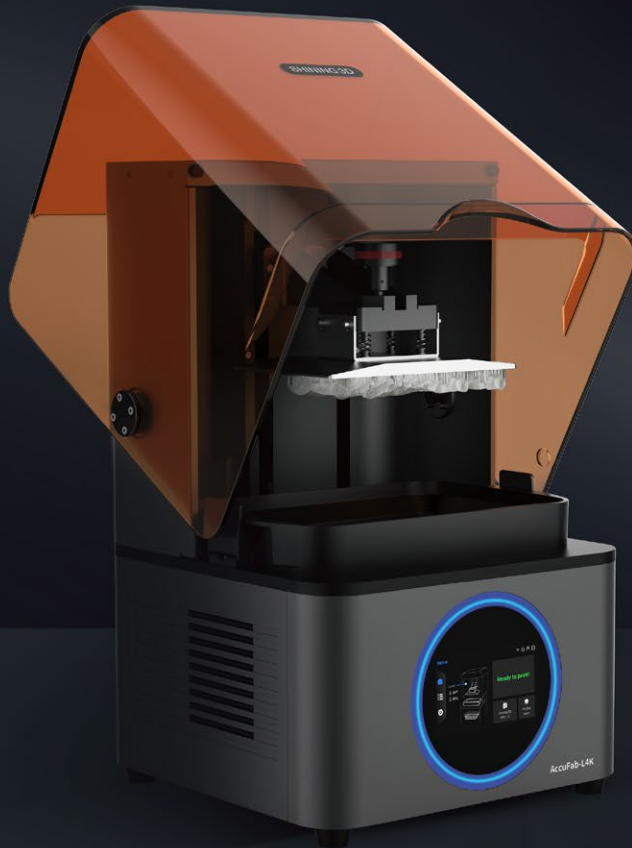
Lit Up For Dentistry



AccuFab-L4K

Large-format Dental 3D Printer

AccuFab-L4K is the latest addition to the SHINING 3D family digital solutions. It is a large-format dental 3D printer developed completely in-house by SHINING 3D to make 3D printing solution more accessible to everyone. It brings users an exceptionally unique printing experience with its features like light-weight, large print size and user-friendly operation.



Connecting the Future

Link Aoralscan with AccuFab

Shining 3D intraoral scanner, 3D printer and dental material ecosystem provides exceptional experience in digital dentistry.

AccuDesign

Life-time free upgrade model creator software that comes with AccuFab-L4K.

Dental Cloud

SHINING 3D's cloud data platform enables data transmission, making it convenient for data transfer and communication between clinics and dental labs.





Unparalleled Accuracy

Accurate Precise

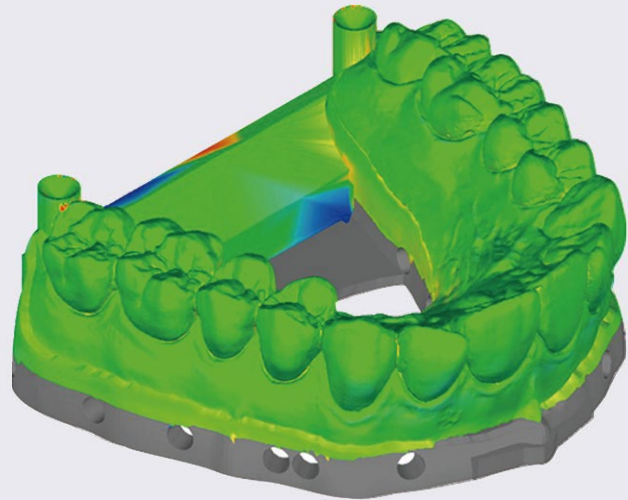
Over 96% of the surface points fits within $\pm 0.1\text{mm}$

Outstanding Uniformity

High luminance uniformity achieves up to 90%

Beyond the Limits

Provides not only the possibility to obtain features smaller than a pixel, but also superior surface finish.

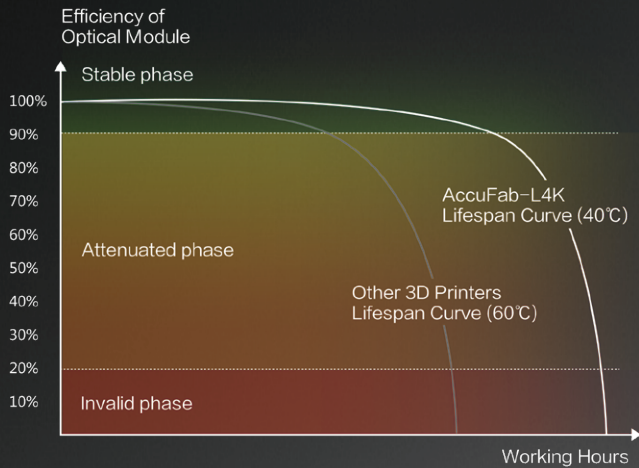




Large Print Size, 4K Resolution

192*120mm printing size and 4K resolution satisfy the demands of users for efficiency and details.





Reliable Performance

Industrial Grade Optical

High quality optical module with long-life components

State-of-the-Art Robustness

AccuFab-L4K's 5 million layers tested in real dental clinic condition provides state-of-the-art reliability.

District Cooling System

DCS (District cooling system) maintains the temperature of working screen under 40°C, while extending the 3D printer lifespan significantly.

Professional Dental Software

Plug and Play

Guided interactive operation provides gentle learning curve

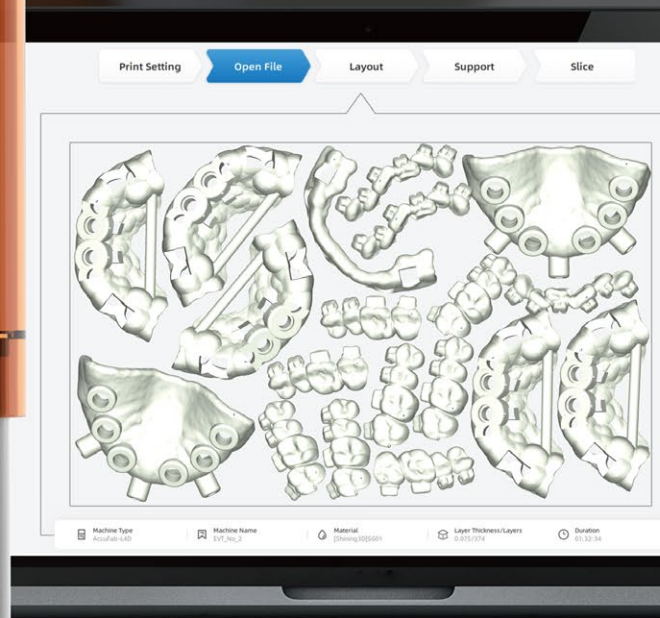
Free Updates

Push update of software and material packages

Accuracy Calibration Wizard

Step by step guide for accuracy calibration







Multiple Material Options

Shining Dent

Shining Dent covers a wide range of materials for dental 3D printing applications, includes dental model, ortho model, surgical guide, castable wax and gingiva mask.

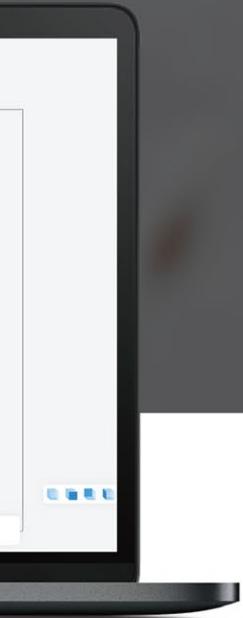
Certified 3rd Party Material

Shining 3D partners with industry leading brands in dental material, providing more possibility and flexibility.

keyprint[®]
by keystone industries

■ BASF
We create chemistry

pro3dure
medical



TECHNICAL SPECIFICATIONS

AccuFab-L4K

| | |
|----------------------|---|
| Printer Size | 360 x 360 x 530 mm |
| Printer Weight | about 19 kg |
| Print Volume (x/y/z) | 192 x 120 x 180 mm |
| Resolution | 3840 x 2400(4K) Px |
| Print Speed | 10-50 mm/h (depends on layer thickness and materials) |
| Layer Thickness | 0.025/0.05/0.075/0.1 mm |
| Accuracy | ± 50 µm |
| Connectivity | USB/Wi-Fi/Ethernet |

*Notice: SHINING 3D reserves the right to introduce modifications or alterations to any of the specifications and images used in this document.

📍 1102 Embassy Chambers, 3rd Road, Khar West, Mumbai - 4000 052, India
☎ +91 22 6127 7777 📞 +91 9930006127 ✉ sales@nkpatelandsons.com
🌐 www.nkpatelandsons.com 📱 @nkpatelandsons 📷 /nkpatelandsons

